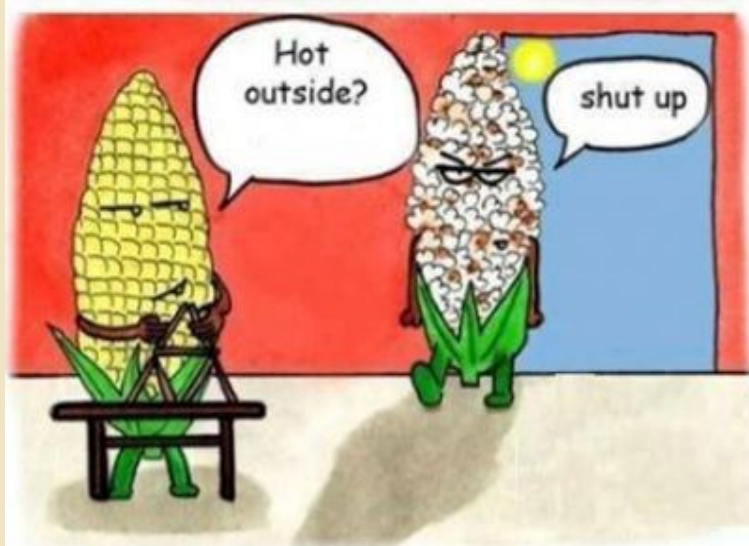




IN THE NEWS THIS WEEK:

- Plants of the Week: Astilbe & Ligularia
- Great savings on Garden Phlox this week
- Japanese Plum trees are 2 for 1
- Salmon Arm Raspberries: 32.00/flat**

July 25th E-NEWS



Yes, it's definitely hot outside and gardening is taking a back seat to going to the beach or sitting in the shade. It's time to relax a bit and enjoy a Shuswap summer.

Just in case you relaxed just a bit too long and forgot to water your planters, there's something you need to know: it can be very hard to re-wet soil mixes once they've dried out and, if you don't re-wet the soil properly, the water will just run down the inside walls of the pot and quickly drain away. If the plants in your planters or hanging baskets are obviously wilted in spite of regular watering, suspect that the soil mix has gotten too dry at some point and that emergency action is required to re-wet it. The easiest method is to set your planter into a large container that can hold gallons of water and just allow the soil to slowly absorb the water. A faster method is to use warm water containing a squirt of dish soap. The soap acts as a surfactant to break down the surface tension of the peat to allow the water to penetrate quickly. Because soil mixes shrink as

they dry, be sure to push the mix back against the sides of the pot so that the water penetrates the soil rather than running down the inside of the pot. If you choose to hand-water your plants or containers, it's important that you water them often and long enough that the roots get wet. It's best to apply water to the root zone for each plant (I like to hold the hose nozzle in place for 5 to 10 seconds depending on the size of the plant) and then **go back and water each one again**. If they're really dry, to do it yet again.



I know that it's summer when I catch a whiff of the fragrance of Summer Phlox wafting through the garden on a warm summer evening. These old-fashioned perennials have long been popular but today's new varieties bloom longer, are more compact and many are powdery mildew resistant~ the bane of older varieties. **This week we've got the Summer Phlox varieties (Phlox paniculata- 14 varieties in stock) on sale at 40% off.**

We've packed up most of the seeds but have kept varieties that are appropriate for summer

planting. Planted now, they'll give you 'fresh-from-the-garden' produce through the fall. Many vegetables *taste better* when grown and harvested in the cool weather of fall including this year's HOTTEST veggie, kale. Others to consider are beets, broccoli, cabbage, carrots, cauliflower, chard, kohlrabi, lettuce, radishes, onions, turnips and fast-growing herbs. If you click on Johnny's Select Seeds link below and scroll down the page you'll find the link to the FALL PLANTING CALENDAR which is a very useful tool to determine when and what to plant at this time of year. <http://www.johnnyseeds.com/t-interactive-tools.aspx>

PLANT OF THE WEEK: Astilbes and

Ligularia While you're sitting in the shade you might want to do something useful. Take inventory of which plants work and which don't and see if you need more, or other, plants to perk things up. Our 'Plants of the Week', Astilbes and Ligularias, are both great shade plants and because they're hardy perennials will provide years of garden interest.



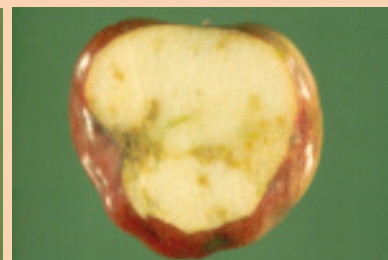
Astilbe chin. taquetii 'Superba' Ligularia 'Britt Marie Crawford'

Both of these stunning plants thrive in moist, rich soil, do well in part to full shade and bloom in mid-summer. Astilbe chinensis taquetii 'Superba' grows to 2 feet tall with blooms that soar to 4 feet. Blooms are excellent for cutting and the plants are deer and rabbit resistant. Britt Marie Crawford Ligularia creates a bold 3 to 4 foot specimen with large maroon-black leaves and bright golden blooms. Both plants are hardy to USDA Zone 3 (which is Canadian Hardiness Zone 4). **All of our Astilbes and Ligularias are 25% off this week.**

PEST ALERT: Apple Maggot



Apple Maggot Fly



The number one insect pest in home apple orchards in many apple growing regions is the apple maggot. Fortunately, to this point, apple maggot has not been a problem in the Interior of BC but it has been a huge problem in Washington State and is becoming more so in the Lower Mainland. This insect damages fruit in several ways. First, its sharp ovipositor punctures the skin as it lays eggs, causing small dimples. The flesh under the skin is also injured, stops growing, and gives the apple an uneven, misshapen appearance. The larva further damages the apple as it tunnels through the fruit resulting in small brown trails which cause the flesh to rot.

Apple maggots spend the winter as pupae in the soil. In early July, ¼ inch long adult flies with black and white markings begin to emerge. Apple maggots are active throughout the summer and into September, but the peak emergence period is late July to early August. There is one generation per year.

Canadian Food Inspection Agency employees have been visiting fruit markets and garden centers in the province to spread the word about the maggot and to encourage everyone to stop the spread of this major pest. To that end, **all members of the public are NOT to bring fruit containers (boxes, bins, etc.), fresh fruit, soil or apple trees from the Lower Mainland into fruit-growing areas including the Okanagan, Shuswap, Similkameen and Creston Valleys.**



Fresh BC plums are just starting to arrive in our market. This week we have red and yellow cherry-sized plums that taste really good! They're 4.50/3 lb. mixed bag.



Santa Rosa

Friar

There are essentially two categories of plums: European (*Prunus domestica*) and Japanese (*Prunus salicina*). The European varieties are generally characterized by oval fruit (e.g. Italian, Stanley, Damson, and Green Gage) whereas Japanese varieties have round fruit, often quite large in size. Most European varieties are at least partially self-fertile even though they will bear heavier crops if they have a cross-pollinator nearby. Japanese varieties, on the other hand, are self-sterile and **MUST** have a second Japanese plum variety planted nearby in order to set fruit. We have 5 varieties of Japanese plum trees in stock (Beauty, Friar, Methley, Elephant Heart and Santa Rose) and **this week when you purchase one at regular price, you'll get the second variety (your pollinator) for FREE!**

SUMMER WORKSHOPS are well under way. Finished are the 'Strawberry Ice Cream Cone Basket', 'Fairy Garden' and 'Living Wreath' workshops. Still to come:

- POND IN A POT:** Wed., July 31 @ 3pm **\$29**
- SUCCULENT SALVAGED SHOES:** Wed. Aug. 7 @ 3pm **\$15**
- SAND CAST BIRD BATH:** Wed. Aug. 14 @ 3pm **\$29**
- ONE HOUR BONSAI:** Wed. Aug. 21 @ 3pm **\$29**
- PLANTERS THAT POP FOR FALL:** Wed. Aug 28 @ 3pm. **\$19**

Several workshops are full but we will plan a second session where there is enough interest. For more information or to register call 250 832 4574 or email hannamarket@shaw.ca

APPLE LANE GIFT SHOP

Who wants to cook when it's so hot outside? Hurray for barbeques!!! **This week all of our Gourmet Village Barbeque Sauces, Hot Sauces, Beer Can chicken mixes, Steak Rubs and Dip mixes are 25 % off.** And because I know you don't want to have to work hard making dessert, **all Gourmet Village No Bake Cheesecake mixes, Frozen Yogurt mixes, and drink mixes are also 25% off.**

Summer is 'outdoor wedding' season. Our gift shop has a great selection of wedding gift ideas and, if all else fails, gift certificates always work. If you're looking for something that's light hearted, don't forget that we have the original **Rednek Wineglasses and Sippers** in stock.



The Original
REDNEK™
 Wine Glass
 Wine-Down Redneck-Style
 by **Carson®**

FEATURED THIS WEEK: July 26-Aug. 1

Japanese Plum trees.....Buy 1, get 1 free

All Summer Phlox.....40%off

Astilbes & Ligularias.....25% off

4" potted annuals*60%off

***except new shipment Sweet Basil & Rosemary**

**All 1 gal. potted annuals, veggies, and
herbs...(except new stock).....25% off**

All hanging baskets25% off

Selected Gourmet Village items.....25% off

**Cut Flowers: Glads.....3.49/bu. 5 stems
Sunflowers.....5.99/bu. 5 stems**

BC Fruit in Stock this week:

**Apricots, Blueberries, Raspberries, Lapin Cherries, Cherry plums, Rainier cherries,
Peaches, and Nectarines.**

**We also carry a variety of essential tools for preserving the harvest as well as some
terrific products for Barbeque Season.**

Happy gardening!

Harriet

HANNA ORCHARDS MARKET & GARDEN CENTRE

3181-11TH Ave. NE., Salmon Arm, BC

(250) 832 4574

www.hannaorchards.com

<https://www.facebook.com/HannaOrchardsFarmMarketGardenCentre>

If you are receiving this newsletter in error or would like to have your name removed from our mail-out list, please go back to the weekly email notice and click on UNSUBSCRIBE.